

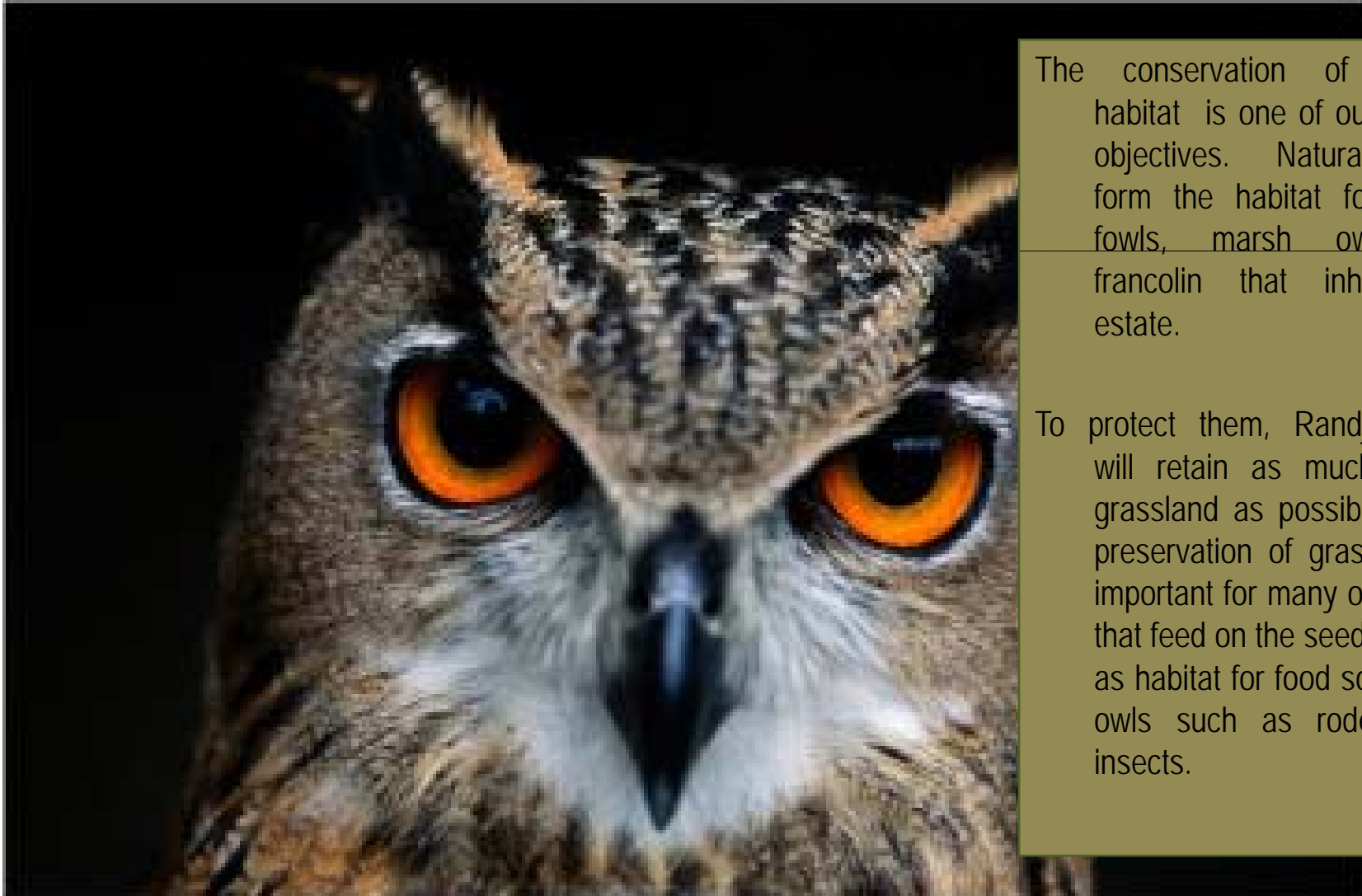


CONSERVANCY

Mandate and Objectives



HABITAT CONSERVATION



The conservation of species habitat is one of our primary objectives. Natural grasses form the habitat for guinea fowls, marsh owls and francolin that inhabit the estate.

To protect them, Randjesfontein will retain as much natural grassland as possible. The preservation of grasslands is important for many other birds that feed on the seeds, as well as habitat for food sources for owls such as rodents and insects.

RANDJES RECYCLING



Recycling of plastic, paper and glass is an ongoing focus of the Randjesfontein Conservancy. To this end we initiate and encourage alliances with packaging companies and recycling companies in order to create the critical mass required for this initiative to be financially sustainable in the medium to long term.



TREES AND GLOBAL WARMING

Your car emits roughly 10kg of c02 every 30km

When you consider that one tree absorbs approximately 10kg of carbon dioxide per year, you begin to realise that we can never have enough trees. The Randjes Conservancy is committed to the continued planting of trees in the estate and surrounding areas in an effort to mitigate C02 emissions, and provide habitats for species.

During Arbour Week, we will be selling trees, just past the corner of Elevation and Everfair , on Fri 5th and Sat 6th Sept.



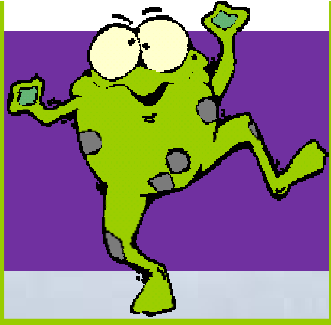


EVERY FROG COUNTS



The protection of habitat of the bullfrog is not merely a moral requirement, it is a legal requirement of the National Environmental Act. The Midrand area is world renowned as a habitat for this species, that is listed on the Red Data List for species threatened with extinction. Protection of habitat such as wetlands and rivers is a priority for the Randjes Conservancy, and current efforts include increasing the number of conservation areas in the N1/R21 Quadrant.

This initiative is done in conjunction with the efforts of www.conservancies.org and www.ewt.co.za. We have identified the wetlands in the Randjes area, and encourage residents to participate in our ongoing efforts.



A LITTLE HELP FROM OUR FRIENDS



We have taken steps to create alliances with other organisations who have conservation and the environment at the heart of their activities, such as the Gecko Conservancy in Kyalami, EWT, and Woolworths.

- These alliances will serve to heighten awareness of the importance of conserving our natural environment, and give us access to the benefits of collective efforts.



IS YOUR FOOD KILLING YOU?



- **M**ineral deficient soils created by modern farming techniques and the use of chemicals and pesticides are producing crops that are lacking in minerals normally present such as potassium and magnesium., and many others.
- Randjes Conservancy intends to keep residents abreast of the latest techniques and methodologies of perma-culture, viticulture and the general benefits of reducing our reliance and exposure to pesticides and inorganic compounds that find their way into the food we eat. Our newsletters will be informative of the latest in environmentally sound gardening and farming practice.



DEVELOPMENT WATCH

- It's important to be aware of what is being planned in the surrounding areas, and ensure that the authorities adhere to the land planning use, or object if we find it inappropriate. It has a direct effect on our conservancy, and we have the right to object. The Regional Spatial Development Plans are very often ignored by town planners and developers.
- A map of the region that was drawn up in 2004 as the R21/R24 Environmental Management Policy, clearly defined land use in the surrounding areas. In particular the neighbouring area to the east, designated as Agricultural, now houses Midstream Estate.

Randjesfontein – part of Control Area 5 is described as follows:

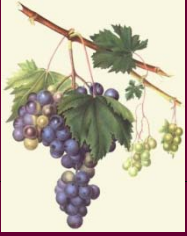
- *This control area comprises three existing built-up areas in the Quadrant, within which only a few small and fragmented open spaces remain. Some of these, however, have been identified as sensitive sites, which must be taken into consideration in any development proposals. **Open spaces to be developed within this control area must be of a similar nature to the already existing developments and must be connected to bulk services.** Open spaces that are ecologically sensitive, connect with other open spaces within the network or those that are being used for recreational purposes should be retained in this state, as they play an important role in the ecological and social functioning of the area. The open spaces should be managed as part of existing open space management systems (e.g. Tshwane Macro Policy Framework and Johannesburg Metropolitan Open Space System). Proposed developments, incorporating the ecologically sensitive open spaces in a creative and sustainable manner, will be considered.*



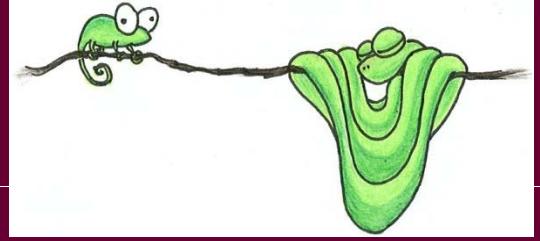
N1/R21 ENVIRONMENTAL MANAGEMENT PLAN

- Land Use Activities Control Area 2 (*between Groenvoer and Randjes*)
AGRICULTURE
- The following land uses are supported within the Agricultural control area:
 - Agricultural research
 - Sustainable initiatives, based on the following sustainable building technology:
 - ecological building materials; renewable energy systems (solar energy);
 - sustainable irrigation methods (grey water, rainwater harvesting);
 - organic compost production; local organic food production;
 - sustainable economics; social and family food schemes; community gardens.
- In response to the high levels of unemployment and the scarcity of food, the incorporation of community gardens and agriculture, which involves the production of crops and livestock farming, should be the main focus of sustainable community development. Although the sanitation requirements for the Quadrant are through bulk services, it is recommended that the sustainable initiatives and technologies suggested above be employed in this control area, where the demand for such facilities is low and the sustainable nature of activities will benefit from such technology.
- The following land uses are not supported within the control area:
 - Commercial or office use;
 - Industrial activities; and
 - Permanent residential dwellings.





GRAPEVINE



GIVE A HOOT

- This is a residents forum for general information that would be of interest to our community. Or bring some issues to our attention that you think need action. In addition to the newsletter forum, we have established a blog page for the Randjes Conservancy which can be found at:
www.rceconservancy.blogspot.com
- Send your snippets and questions to :
info@neutralfutures.com